



ZERO FATALITIES IS NOW ACHIEVABLE!

Forwood has created a proven global benchmark process in critical risk management (CRM). The industry-proven technology has been fine-tuned from more than 8.75 million hours of field testing in real work environments, by some of the largest high-risk operations across more than 30 countries.

FORWOOD + SMART STAFF INTERNATIONAL CHANNEL PARTNERSHIP

Creating practical end-to-end fatality prevention solutions

CHANNEL PARTNERSHIP OVERVIEW

Forwood's Critical Risk Management (CRM) solution has grown over a 9-year period to create the world benchmark in fatality prevention. Forwood is an innovative safety company with a contemporary approach on accident causation. With growing demand, it was essential to partner with a trusted organisation with the same passion for safety and risk management.

Forwood and Smart Staff International (SSI) both have a deep inherent commitment to risk management. This genuine passion for safety runs deep in the DNA of both organisations so it was natural for a partnership to form.

SSI provide services to a wide range of blue chip and emerging local and multinational businesses to ensure a thorough and expedited turnaround to their safety system requirements, without compromising the workload of their operations.

Organisations can rest assured that a Forwood-SSI team will support their CRM deployments through each phase of their fatality elimination journey; from initial planning and embedding, to ongoing leadership coaching and sustainment.

VALUE PROPOSITION:

- ✓ Forwood CRM Academy certified Coaches and CRM Champion level resources
- ✓ Personnel with extensive 'hands-on' experience in operational, management, engineering, and maintenance roles.
- ✓ Strong history servicing the Mining, Minerals Processing, Oil and Gas, Transport, Manufacturing, Heavy Industrial & Utilities industries
- ✓ Esteemed reputation for delivering consistently high standards of work and innovative solutions.
- ✓ Practical and effective delivery of bespoke coaching and training services.

CRM OVERVIEW

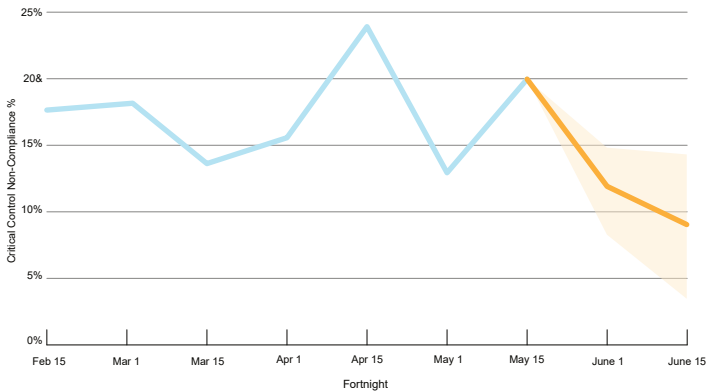
The Critical Risk Management (CRM) solution is a layered verification process focused solely on fatality elimination. At the foundation of CRM are 18 core critical risks; each of which present the potential for a fatality. The risks can be applied to multiple industries and are an important part of an organisation's visual and communication strategy.



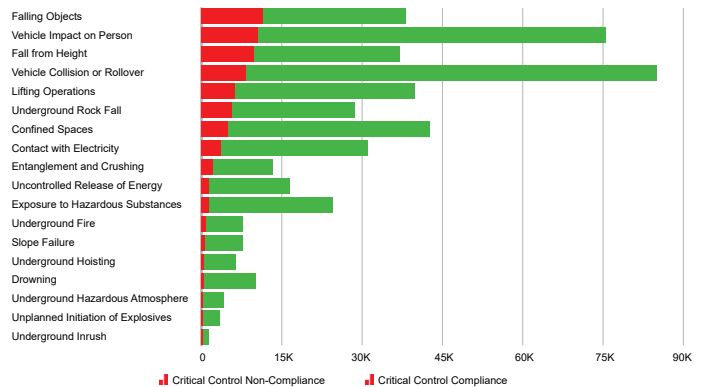
Standardised binary question sets have been recognised as a global benchmark in industry. Critical control checklists are applied at Manager, Supervisor and Operator/Maintainer levels giving 3 layers of protection against the same risk, mitigating the likelihood of a fatality occurring.

Millions of data points about the effectiveness of life-saving critical controls are collected within the CRM portal and are rapidly organised for deeper insights and more meaningful review. Using machine learning technology, Forwood's FAST Reporting tool can also predict where the next fatality is most likely to occur, so organisations can establish very targeted and effective safety campaigns.

Verification Non-Compliance % Forecast



Verification Volume (by Risk, Control, Site level, Verifier)



CREDENTIALS

As partners with Forwood, Smart Staff International offer clients:



Level 1: SMEs supporting CRM Fundamentals entry-level training, suitable for all employees and contractors



Level 2: SMEs supporting CRM for Frontline Leaders and base Reporting, suitable for supervisors and team leaders



Level 3: SMEs supporting CRM for Site Management, advanced training suitable for senior managers and superintendents

SAFETY CONSULTING SERVICES



WHO IS FORWOOD?

Zero fatalities is now achievable through Forwood CRM. We are an innovative safety company with a contemporary approach on accident causation. Discontent with following traditional safety theories that continue to prove ineffective in preventing workplace fatalities; Forwood has now created a patented 3-tiered approach, supported by comprehensive content all leveraging advancements in technology to question, test and overthrow these longstanding thought patterns, forming completely new methodologies in safety.

These methodologies underpin Forwood's flagship product CRM, which through simple checklists and tools has assisted global organisations to 'break through the safety plateau' and achieve ground-breaking results. Early adopters of Forwood's CRM are attaining records in fatality prevention never before realised in the history of their operations.



WHO IS SSI?

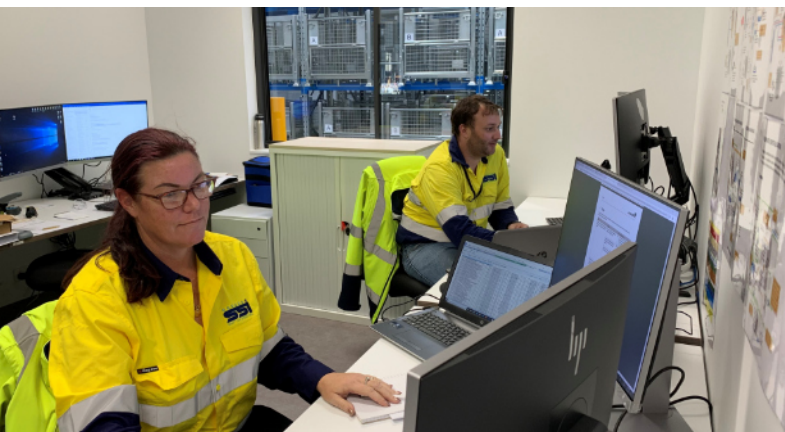
Smart Staff International (SSI) has delivered effective practical workplace solutions internationally for 20+ years on over 1000 projects across 25+ countries.



All our staff have extensive industry relevant experience, and combined with our innovative project tools, we deliver quality and cost-effective solutions that meet operational needs, corporate policy, and legislative requirements. Our aim is to provide systems specific to your site and your operation that align with our principle of "Creating Practical Workplace Systems".

With a reputation for delivering consistently high standards of work and innovative solutions, SSI always strives to exceed its customer's expectations.

The smart choice for your critical risk management program



i For further details or to arrange a pilot please contact:

Brad D. Wilson

+1 615 610 7670 (USA)
brad.w@forwoodsafety.com
www.forwoodsafety.com

Rob Cockle

+61 8 6489 1201 (Australia)
r.cockle@smartstaffint.com
www.smartstaffinternational.com